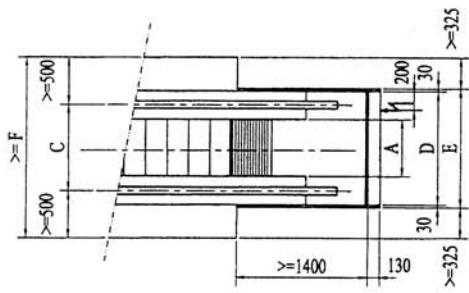
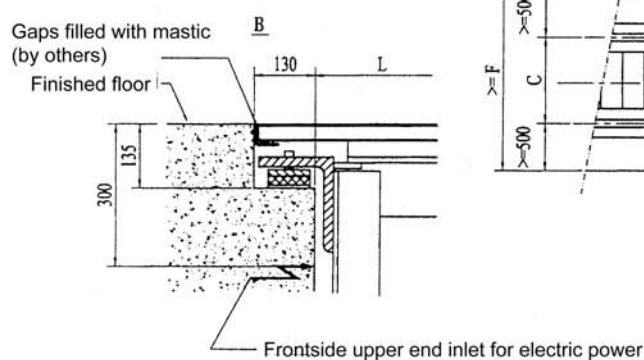
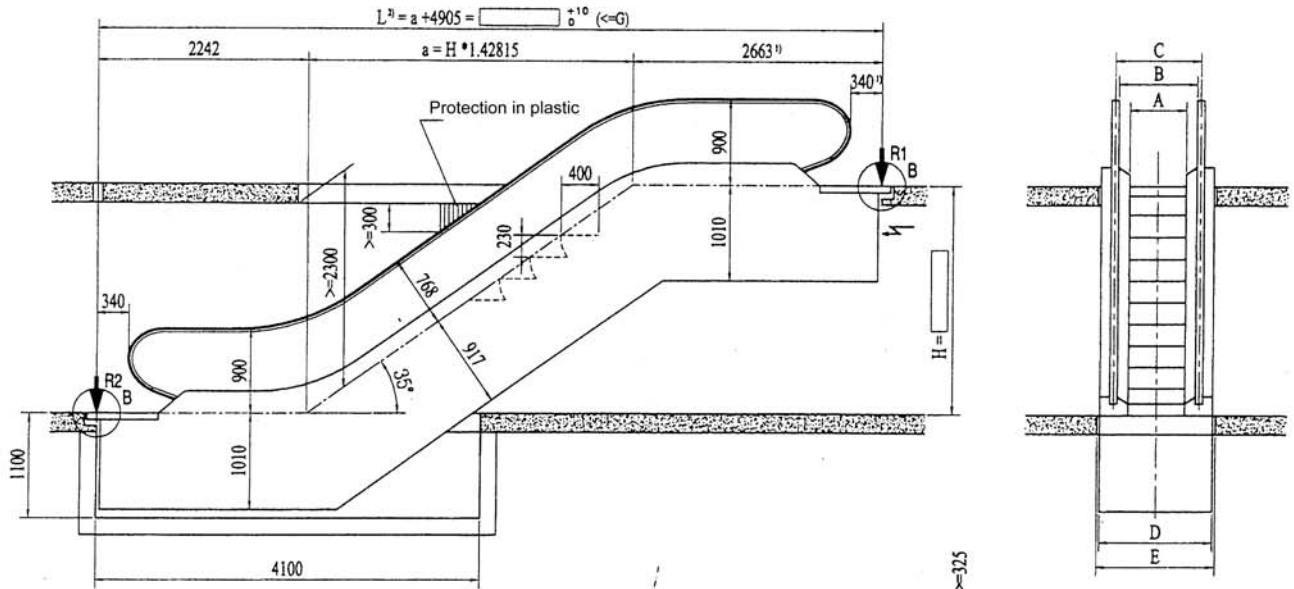


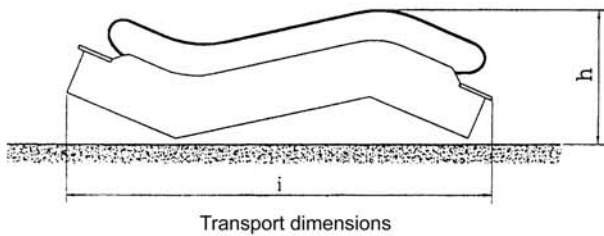
RULLAB AB

SYS 35-60 K
 35-80 K-I, II
 35-100K

V=0.5m/S



	600	800	1000
A	600	800	1000
B	757	957	1157
C	837	1037	1237
D	1200	1400	1600
E	1260	1460	1660
F	1910	2110	2310
G	18500	16900	15700



- 1) To meet exactly code requirements for maintenance space, truss must be extended by 417mm for step width 600mm
- 2) If $L > G$ middle support is necessary

TYPE	H mm	Weight KN	R1 KN	R2 KN	kW	h	i	
35-60K 4500P/h	3000	54	43	39	5.5	2850	10180	
	3500	57	46	41		2890	11030	
	4000	60	49	44		2920	11890	
	4500	64	52	46		2940	12750	
	5000	67	54	49	2970	13610		
	5500	70	57	51	2980	14470		
35-80K 6750P/h	6000	73	60	54	8	3000	15330	
	3000	56	49	44	5.5	2850	10180	
	3500	60	52	47		2890	11030	
	4000	63	56	50		2920	11890	
	4500	66	59	53		2940	12750	
	5000	70	62	56	2970	13610		
5500	73	65	59	2980	14470			
35-100K 9000P/h	6000	76	69	61	8	3000	15330	
	3000	60	56	50		5.5	2850	10180
	3500	64	60	53			2890	11030
	4000	67	64	57			2920	11890
	4500	71	67	60	2940		12750	
	5000	74	71	64	2970	13610		
5500	82	77	69	2980	14470			
6000	85	81	72	11	3000	15330		